

# Unemployment Digest



## Summary

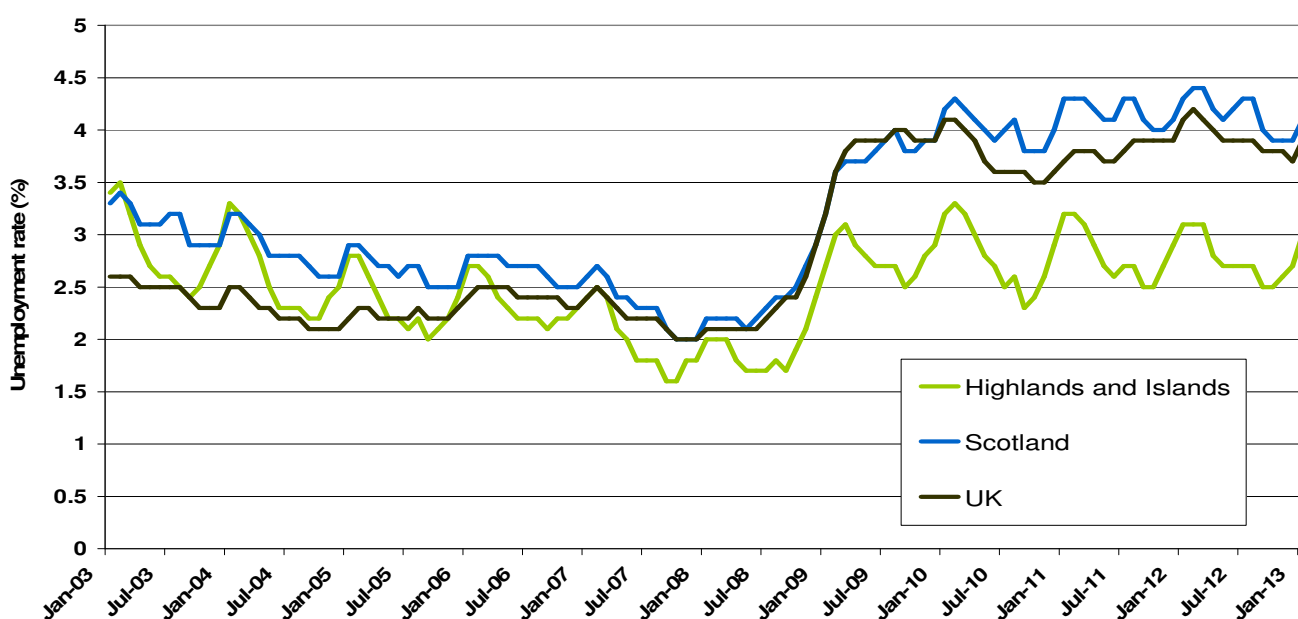
The Information contained in this report is based on Claimant Count figures. The Job Seekers Allowance (JSA) Claimant Count records the number of people claiming JSA and National Insurance (NI) credits at Job Centre Plus local offices. HIE continues to use the Claimant Count data as it is available at a more local level than the ILO unemployment rate statistics provided by ONS. Claimant Count statistics are available monthly at Area Office and Travel to Work Area level. This means we are able to identify, interpret and respond to changes in very local labour markets.

The January 2013 unemployment figures were released on 20<sup>th</sup> February 2013. Over the month, December 2012 to January 2013, the number of people claiming unemployment benefit in the United Kingdom increased 3.8% from 1,523,222 to 1,581,838 (+58,616 claimants). This figure is 4.1% lower than the same period last year, when the number of claimants stood at 1,649,190, which represents a decrease of 67,352 claimants.

The number of people claiming unemployment benefit in Scotland increased by 6.3% over the month, from 133,503 to 141,972 claimants (+8,469 claimants). This figure is 4.2% lower than the same period last year, when the number of claimants stood at 148,151, representing a decrease of 6,179 claimants.

The number of people claiming unemployment benefit in the Highlands and Islands rose by 6.8% (590 claimants) over the month, from 7,736 to 8,326 claimants. This figure is 3.8% lower than the same period last year, when the number of claimants stood at 8,569, which represents a decrease of 333 claimants.

**Figure 1 - TTWA Unemployment rates (%): 2003-2013**



Source: Claimant Count (NOMIS) – seasonally unadjusted  
 Note: Working age is defined as 16-64 for both men and women

## Table 1 – Unemployment rates by TTWA

Table 1 below illustrates the Claimant Count rates for January 2013, using the 2001 TTWAs (Travel to Work Areas). The Claimant Count rates are compared with December 2012 and January 2012 to highlight the monthly and annual changes. The TTWAs are ranked in descending order by the January 2013 figure.

Area	January 2013	December 2012	January 2012
Dunoon & Bute	5.6	5.3	5.6
Wick	4.2	4.4	5.1
Invergordon	4.2	4.0	4.1
Skye & Lochalsh	3.7	3.6	3.8
Campbeltown	3.7	3.5	5.3
Lochaber	3.4	3.1	3.4
Thurso	3.3	3.3	3.4
Eilean Siar	3.1	2.9	3.4
Oban	3.1	2.9	3.2
Lochgilphead	3.0	2.7	2.7
Dornoch & Lairg	2.9	2.7	3.2
Inverness & Dingwall	2.8	2.5	2.7
Ullapool & Gairloch	2.6	2.8	2.5
Moray	2.6	2.3	2.9
Badenoch	2.4	2.2	1.9
Mull & Islay	2.1	1.8	2.1
Shetland Islands	1.5	1.5	1.5
Orkney Islands	1.4	1.4	2.1
<b>HIE TTWAs</b>	<b>3.0</b>	<b>2.7</b>	<b>3.1</b>
Highland	3.1	2.9	3.1
Scotland	4.1	3.9	4.3
United Kingdom	3.9	3.7	4.0

Source: Claimant Count (NOMIS)

Over the month to January 2013, the claimant count rose in 13 TTWAs, fell in 2 (Wick and Ullapool and Gairloch) and remained static in 3 (Shetland, Orkney and Thurso). Dunoon and Bute, Inverness and Dingwall, Lochaber, Lochgilphead, Moray and Mull and Islay all experienced the largest increase (0.3 percentage points) in the unemployment rate over the month.

Over the year to January 2013, the claimant count rose in 5, fell in 9 and was stable in 4 TTWAs. Badenoch experienced the largest increase over the year (from 1.9% to 2.4%) and Campbeltown experienced the largest decrease (from 5.3% to 3.7%).

**Table 2 – Number of unemployed by Area Office**

Table 2 below traces changes in the numbers (not rates) of unemployed people claiming benefits in the Highlands and Islands Enterprise Area Offices (AOs) between December 2012 and January 2013. A yearly comparison between January 2012 and January 2013 is also provided. The AOs are ranked in descending order by the size of the annual change in the number of unemployed, displayed in the right hand column.

Area Office	Number claiming unemployment benefit (January 2013)	% change in number claiming unemployment benefit (Dec 12 – Jan 13)	% change in number claiming unemployment benefit (Jan 12 – Jan 13)
Inner Moray Firth	2,775	10.0	5.7
Lochaber, Skye & Wester Ross	797	3.8	-1.0
Shetland	213	-0.9	-3.6
Argyll & the Islands	1,611	7.6	-3.9
Innse Gall	506	9.8	-8.7
Moray	1,430	12.2	-10.2
Caithness & Sutherland	820	-0.4	-11.0
Orkney	174	-1.1	-34.1
<b>HIE Area</b>	<b>8,326</b>	<b>7.6</b>	<b>-3.8</b>
Highland	4,392	6.8	0.9
Scotland	141,972	6.3	-4.2
United Kingdom	1,581,838	3.8	-4.1

Source: Claimant Count (NOMIS)

Over the month to January 2013, the number of people claiming unemployment benefit rose in 5, and fell in 3 area offices. Moray had the greatest increase over the month, rising 12.2% from 1,274 to 1,430 claimants. Orkney experienced the greatest decrease over the month, although the 1.1% decrease represented a fall of only 2 claimants (from 176 to 174).

Over the year to January 2013, the number of people claiming unemployment benefit fell in all but one of the area offices. Inner Moray Firth had the only increase over the year, rising 5.7% from 2,625 to 2,775 claimants. Orkney had the greatest decrease over the year, falling 34.1% from 264 to 174 claimants.

**Table 3 – Long-term unemployment by Area Office**

For the purpose of this analysis, long-term unemployment (LTU) is defined as 'all those who have been unemployed and claiming benefit for over 6 months'. Table 3 below shows the number of people who were long-term unemployed in January 2013 by Area Office. It also highlights the percentage change in the number of those claiming long-term unemployment benefit over the month (December 2012 to January 2013) and over the year (January 2012 to January 2013). The AOs are ranked by the annual percentage change in numbers of LTU.

Area Office	January 2013	% Change in number of LTU (Dec 12 – Jan 13)	% Change in number of LTU (Jan 12 – Jan 13)
Lochaber, Skye & Wester Ross	215	10.3	26.5
Shetland	60	9.1	20.0
Inner Moray Firth	815	1.9	7.9
Innse Gall	235	6.8	6.8
Moray	460	2.2	-4.2
Argyll & the Islands	645	4.9	-5.1
Caithness & Sutherland	365	-1.4	-5.2
Orkney	65	0.0	-18.8
<b>HIE Area</b>	<b>2,860</b>	<b>3.2</b>	<b>1.4</b>
Highland	1,395	2.2	6.5
Scotland	60,635	3.6	-0.6
United Kingdom	680,160	2.9	0.5

Source: Claimant Count (NOMIS)

Over the month to January 2013, the number of long-term unemployment benefit claimants rose in 7, fell in 1 and remained steady in 1 Area Office. Caithness and Sutherland was the only area to experience a decline in long term unemployment, with the numbers falling from 370 to 365 over the month. LTU in Orkney remained steady over the month, with all remaining AOs experiencing increases over the period with Lochaber, Skye & Wester Ross experiencing the greatest increase over the month (10.3% from 195 to 215 claimants).

Over the year to January 2013, the number of people claiming long-term unemployment benefit rose in 4 and fell in 4 of the area offices. Lochaber, Skye & Wester Ross had the greatest increase over the year, rising 26.5% from 170 to 215 claimants. Orkney had the greatest decrease over the year, falling 18.8% from 80 to 65 claimants.

Rachel Forrest – Economic Intelligence [rachel.forrest@hient.co.uk](mailto:rachel.forrest@hient.co.uk) Tel: (01463) 244433  
 Heather Smith – Research Officer [heather.smith@hient.co.uk](mailto:heather.smith@hient.co.uk) Tel: (01463) 244320  
 Kateryna McKinnon – Economist [kateryna.mckinnon@hient.co.uk](mailto:kateryna.mckinnon@hient.co.uk) Tel: (01463) 244258

Further economic information and previous factsheets can be accessed on the HIE Website: <http://www.hie.co.uk>

© Please acknowledge Highlands and Islands Enterprise when using any information contained in this report.