

# Unemployment Digest



## Summary

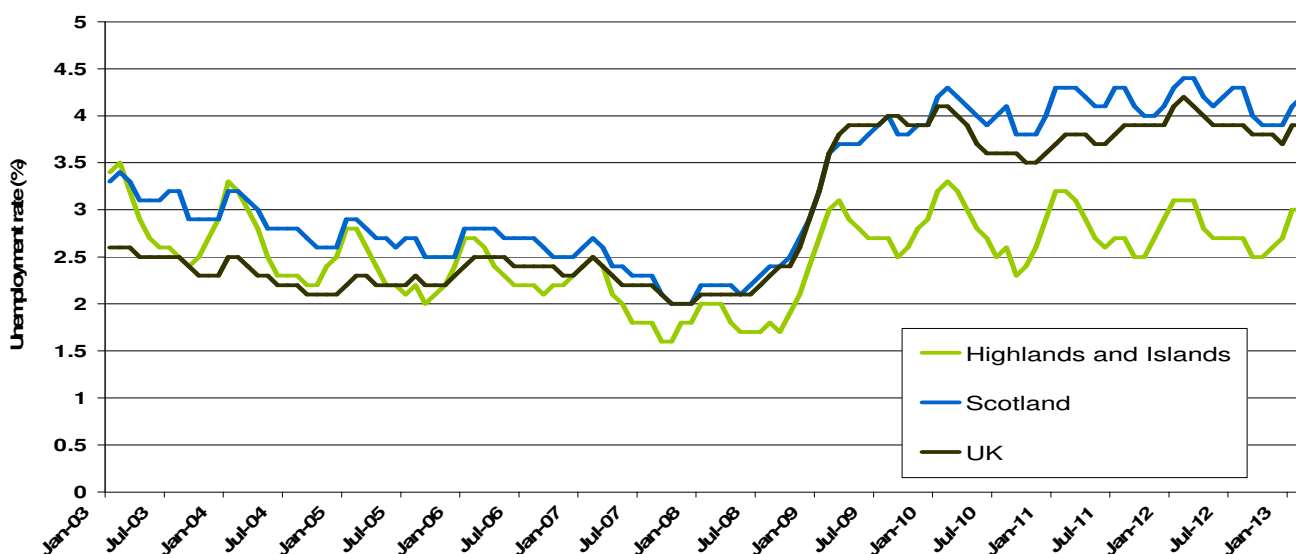
The Information contained in this report is based on Claimant Count figures. The Job Seekers Allowance (JSA) Claimant Count records the number of people claiming JSA and National Insurance (NI) credits at Job Centre Plus local offices. HIE continues to use the Claimant Count data as it is available at a more local level than the ILO unemployment rate statistics provided by ONS. Claimant Count statistics are available monthly at Area Office and Travel to Work Area level. This means we are able to identify, interpret and respond to changes in very local labour markets.

The February 2013 unemployment figures were released on 20<sup>th</sup> March 2013. Over the month, January to February 2013, the number of people claiming unemployment benefit in the United Kingdom increased 2.0% from 1,581,838 to 1,613,789 (+31,951 claimants). This figure is 4.3% lower than the same period last year, when the number of claimants stood at 1,685,989, which represents a decrease of 72,200 claimants.

The number of people claiming unemployment benefit in Scotland increased by 2.8% over the month, from 141,972 to 145,919 claimants (+3,947 claimants). This figure is 3.9% lower than the same period last year, when the number of claimants stood at 151,896, representing a decrease of 5,977 claimants.

The number of people claiming unemployment benefit in the Highlands and Islands rose by 2.5% (+204 claimants) over the month, from 8,326 to 8,530 claimants. This figure is 3.3% lower than the same period last year, when the number of claimants stood at 8,824, which represents a decrease of 294 claimants.

**Figure 1 - TTWA Unemployment rates (%): 2003-2013**



Source: Claimant Count (NOMIS) – seasonally unadjusted  
 Note: Working age is defined as 16-64 for both men and women

## Table 1 – Unemployment rates by TTWA

Table 1 below illustrates the Claimant Count rates for February 2013, using the 2001 TTWAs (Travel to Work Areas). The Claimant Count rates are compared with January 2013 and February 2012 to highlight the monthly and annual changes. The TTWAs are ranked in descending order by the February 2013 figure.

Area	February 2013	January 2013	February 2012
Dunoon & Bute	5.7	5.6	5.6
Invergordon	4.4	4.2	3.8
Wick	4.4	4.2	4.9
Campbeltown	3.9	3.7	5.4
Skye & Lochalsh	3.9	3.7	3.9
Lochaber	3.5	3.4	3.6
Dornoch & Lairg	3.2	2.9	3.3
Eilean Siar	3.2	3.1	3.6
Oban	3.1	3.1	3.3
Thurso	3.1	3.3	3.7
Lochgilphead	3.0	3.0	2.6
Ullapool & Gairloch	2.9	2.6	2.5
Inverness & Dingwall	2.8	2.8	2.7
Badenoch	2.6	2.4	2.2
Moray	2.6	2.6	3.0
Mull & Islay	2.1	2.1	2.0
Orkney Islands	1.5	1.4	2.0
Shetland Islands	1.5	1.5	1.5
<b>HIE TTWAs</b>	<b>3.0</b>	<b>3.0</b>	<b>3.1</b>
Highland	3.2	3.1	3.1
Scotland	4.2	4.1	4.4
United Kingdom	3.9	3.9	4.1

Source: Claimant Count (NOMIS)

Over the month to February 2013, the claimant count rose in 11 TTWAs, fell in 1 and remained static in 6 – Oban, Lochgilphead, Inverness & Dingwall, Moray, Mull & Islay and Shetland Islands. Dornoch & Lairg and Ullapool & Gairloch both shared the greatest increase over the month, both rising by 0.3%. Thurso was the only area to decrease over the month, falling 0.2% from 3.3% to 3.1%.

Over the year to February 2013, the claimant count rose in 7, fell in 9 and was stable in 2 TTWAs – Skye & Lochalsh and Shetland Islands. Invergordon had the greatest increase over the year, rising 0.6% from 3.8% to 4.4%. Campbeltown had the greatest decrease over the year, falling 1.5% from 5.4% to 3.9%.

**Table 2 – Number of unemployed by Area Office**

Table 2 below traces changes in the numbers (not rates) of unemployed people claiming benefits in the Highlands and Islands Enterprise Area Offices (AOs) between January 2013 and February 2013. A yearly comparison between February 2012 and February 2013 is also provided. The AOs are ranked in descending order by the size of the annual change in the number of unemployed, displayed in the right hand column.

<b>Area Office</b>	<b>Number claiming unemployment benefit (February 2013)</b>	<b>% change in number claiming unemployment benefit (Jan 13 - Feb 13)</b>	<b>% change in number claiming unemployment benefit (Feb 12 - Feb 13)</b>
Inner Moray Firth	2,827	1.9	6.7
Lochaber, Skye & Wester Ross	850	6.6	0.7
Shetland	211	-0.9	-0.5
Argyll & the Islands	1,644	2.0	-3.1
Caithness & Sutherland	832	1.5	-10.8
Innse Gall	519	2.6	-11.0
Moray	1,456	1.8	-12.0
Orkney	191	9.8	-24.2
<b>HIE Area</b>	<b>8,530</b>	<b>2.5</b>	<b>-3.3</b>
Highland	4,509	2.7	1.9
Scotland	145,919	2.8	-3.9
United Kingdom	1,613,789	2.0	-4.3

Source: Claimant Count (NOMIS)

Over the month to February 2013, the number of people claiming unemployment benefit rose in 7, and fell in 1 area office. Orkney had the greatest increase over the month, rising 9.8% from 174 to 191 claimants. Shetland was the only area office to decrease over the month, falling 0.9% from 213 to 211.

Over the year to February 2013, the number of people claiming unemployment benefit rose in 2 and fell in 6 area offices. Inner Moray Firth had the greatest increase over the year, rising 6.7% from 2,650 to 2,827 claimants. Orkney had the greatest decrease over the year, falling 24.2% from 252 to 191 claimants.

### Table 3 – Long-term unemployment by Area Office

For the purpose of this analysis, long-term unemployment (LTU) is defined as 'all those who have been unemployed and claiming benefit for over 6 months'. Table 3 below shows the number of people who were long-term unemployed in February 2013 by Area Office. It also highlights the percentage change in the number of those claiming long-term unemployment benefit over the month (January 2013 to February 2013) and over the year (February 2012 to February 2013). The AOs are ranked by the annual percentage change in numbers of LTU.

Area Office	% Change in	
	February 2013 number	number of LTU (Jan 13 - Feb 13)
Lochaber, Skye & Wester Ross	235	9.3
Inner Moray Firth	835	2.5
Caithness & Sutherland	385	5.5
Shetland	60	0.0
Innse Gall	225	-4.3
Argyll & the Islands	660	2.3
Moray	455	-1.1
Orkney	70	7.7
<b>HIE Area</b>	<b>2,925</b>	<b>2.3</b>
Highland	1,460	4.7
Scotland	61,215	1.0
United Kingdom	687,265	1.0

Source: Claimant Count (NOMIS)

Over the month to February 2013, the number of long-term unemployment benefit claimants rose in 5, fell in 2 and remained static in 1 Area Office – Shetland. Lochaber, Skye & Wester Ross had the greatest increase over the month, rising 9.3% from 215 to 235 claimants. Innse Gall had the greatest decrease over the month, falling 4.3% from 235 to 225 claimants.

Over the year to February 2013, the number of people claiming long-term unemployment benefit rose in 3, fell in 4, and was static in the remaining area office – Shetland. Lochaber, Skye & Wester Ross had the greatest increase over the year, rising 20.5% from 195 to 235 claimants. Orkney had the greatest decrease over the year, falling 12.5% from 80 to 70 claimants.

Heather Smith – Research Officer

[heather.smith@hient.co.uk](mailto:heather.smith@hient.co.uk)

Tel: (01463) 244320

Kateryna McKinnon – Economist

[kateryna.mckinnon@hient.co.uk](mailto:kateryna.mckinnon@hient.co.uk)

Tel: (01463) 244258

Further economic information and previous factsheets can be accessed on the HIE Website: <http://www.hie.co.uk>

© Please acknowledge Highlands and Islands Enterprise when using any information contained in this report.