

# Unemployment Digest



## Summary

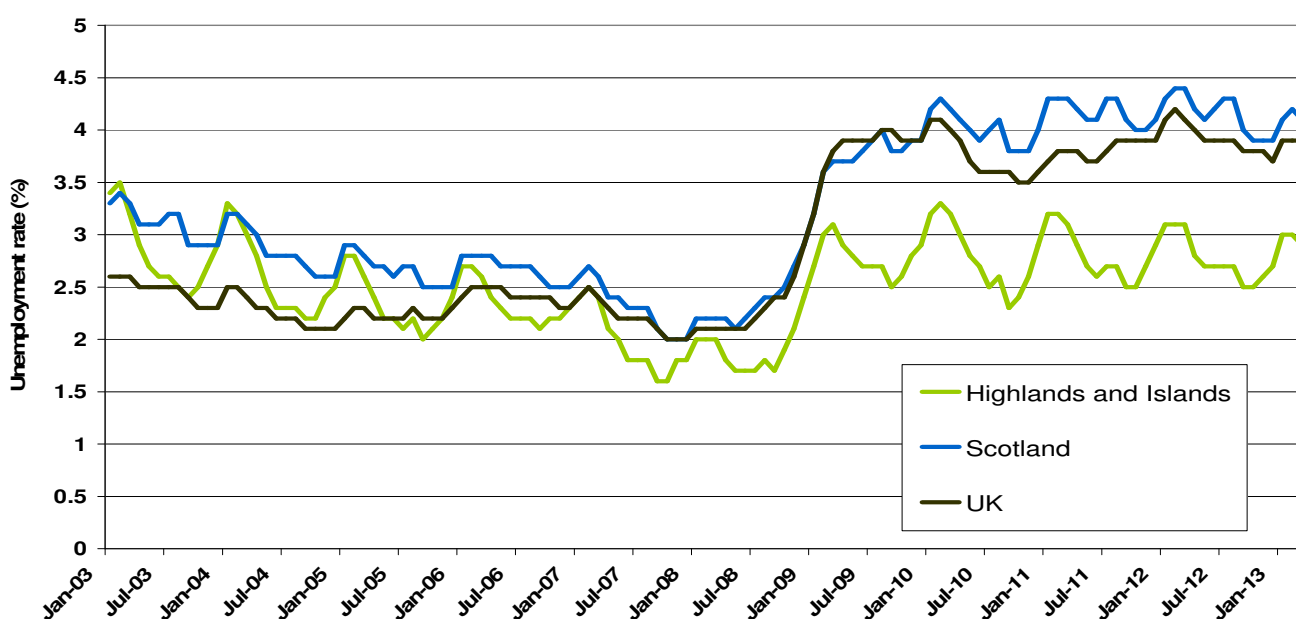
The Information contained in this report is based on Claimant Count figures. The Job Seekers Allowance (JSA) Claimant Count records the number of people claiming JSA and National Insurance (NI) credits at Job Centre Plus local offices. HIE continues to use the Claimant Count data as it is available at a more local level than the ILO unemployment rate statistics provided by ONS. Claimant Count statistics are available monthly at Area Office and Travel to Work Area level. This means we are able to identify, interpret and respond to changes in very local labour markets.

The March 2013 unemployment figures were released on 17<sup>th</sup> April 2013. Over the month, February to March 2013, the number of people claiming unemployment benefit in the United Kingdom decreased by 1.8% from 1,613,789 to 1,584,468 (-29,321 claimants). This figure is 4.9% lower than the same period last year, when the number of claimants stood at 1,666,859, which represents a decrease of 82,391 claimants.

The number of people claiming unemployment benefit in Scotland decreased by 2.0% over the month, from 145,919 to 142,965 claimants (-2,954 claimants). This figure is 4.9% lower than the same period last year, when the number of claimants stood at 150,377, representing a decrease of 7,412 claimants.

The number of people claiming unemployment benefit in the Highlands and Islands fell by 4.8% (-411 claimants) over the month, from 8,530 to 8,119 claimants. This figure is 7.3% lower than the same period last year, when the number of claimants stood at 8,758, which represents a decrease of 639 claimants.

**Figure 1 - TTWA Unemployment rates (%): 2003-2013**



Source: Claimant Count (NOMIS) – seasonally unadjusted  
 Note: Working age is defined as 16-64 for both men and women

## Table 1 – Unemployment rates by TTWA

Table 1 below illustrates the Claimant Count rates for March 2013, using the 2001 TTWAs (Travel to Work Areas). The Claimant Count rates are compared with February 2013 and March 2012 to highlight the monthly and annual changes. The TTWAs are ranked in descending order by the March 2013 figure.

Area	March 2013	February 2013	March 2012
Dunoon & Bute	5.5	5.7	5.7
Wick	4.5	4.4	4.9
Invergordon	3.9	4.4	3.8
Campbeltown	3.8	3.9	5.3
Skye & Lochalsh	3.6	3.9	3.8
Lochaber	3.3	3.5	3.4
Eilean Siar	3.1	3.2	3.5
Thurso	3.1	3.1	3.9
Oban	2.9	3.1	2.9
Ullapool & Gairloch	2.8	2.9	2.7
Dornoch & Lairg	2.7	3.2	3.2
Lochgilphead	2.7	3.0	2.6
Inverness & Dingwall	2.6	2.8	2.8
Moray	2.6	2.6	2.9
Badenoch	2.4	2.6	2.1
Mull & Islay	1.9	2.1	2.0
Shetland Islands	1.6	1.5	1.6
Orkney Islands	1.5	1.5	1.9
<b>HIE TTWAs</b>	<b>2.9</b>	<b>3.0</b>	<b>3.1</b>
Highland	3.0	3.2	3.1
Scotland	4.1	4.2	4.4
United Kingdom	3.9	3.9	4.1

Source: Claimant Count (NOMIS)

Over the month to March 2013, the claimant count rose in 2 TTWAs, fell in 14 and remained static in 2 – Moray and Orkney Islands. The only areas to increase over the month were Wick and Shetland Islands, which both rose by 0.1%. Invergordon and Dornoch & Lairg shared the greatest decrease over the month, both falling by 0.5%.

Over the year to March 2013, the claimant count rose in 4, fell in 12 and was stable in 2 TTWAs – Skye & Lochalsh and Shetland Islands. Badenoch had the greatest increase over the year, rising 0.3% from 2.1% to 2.4%. Campbeltown had the greatest decrease over the year, falling 1.5% from 5.3% to 3.8%.

**Table 2 – Number of unemployed by Area Office**

Table 2 below traces changes in the numbers (not rates) of unemployed people claiming benefits in the Highlands and Islands Enterprise Area Offices (AOs) between February 2013 and March 2013. A yearly comparison between March 2012 and March 2013 is also provided. The AOs are ranked in descending order by the size of the annual change in the number of unemployed, displayed in the right hand column.

<b>Area Office</b>	<b>Number claiming unemployment benefit (March 2013)</b>	<b>% change in number claiming unemployment benefit (Feb 13 - Mar 13)</b>	<b>% change in number claiming unemployment benefit (Mar 12 - Mar 13)</b>
Shetland	230	9.0	-0.9
Inner Moray Firth	2,616	-7.5	-1.8
Lochaber, Skye & Wester Ross	793	-6.7	-3.9
Argyll & the Islands	1,555	-5.4	-5.8
Innse Gall	501	-3.5	-11.5
Moray	1,421	-2.4	-12.9
Caithness & Sutherland	816	-1.9	-13.5
Orkney	187	-2.1	-23.7
<b>HIE Area</b>	<b>8,119</b>	<b>-4.8</b>	<b>-7.3</b>
Highland	4,225	-6.3	-4.7
Scotland	142,965	-2.0	-4.9
United Kingdom	1,584,468	-1.8	-4.9

Source: Claimant Count (NOMIS)

Over the month to March 2013, the number of people claiming unemployment benefit rose in 1, and fell in 7 area offices. Shetland was the only area to increase over the month, rising 9.0% from 211 to 230 claimants. Inner Moray Firth had the greatest decrease over the month, falling 7.5% from 2,827 to 2,616.

Over the year to March 2013, the number of people claiming unemployment benefit fell in all 8 area offices. Orkney had the greatest decrease over the year, falling 23.7% from 245 to 187 claimants.

### Table 3 – Long-term unemployment by Area Office

For the purpose of this analysis, long-term unemployment (LTU) is defined as 'all those who have been unemployed and claiming benefit for over 6 months'. Table 3 below shows the number of people who were long-term unemployed in March 2013 by Area Office. It also highlights the percentage change in the number of those claiming long-term unemployment benefit over the month (February 2013 to March 2013) and over the year (March 2012 to March 2013). The AOs are ranked by the annual percentage change in numbers of LTU.

Area Office	March 2013 number	% Change in number of LTU (Feb 13 - Mar 13)	% Change in number of LTU (Mar 12 - Mar 13)
Lochaber, Skye & Wester Ross	240	2.1	17.1
Inner Moray Firth	880	5.4	10.7
Shetland	65	8.3	0.0
Caithness & Sutherland	385	0.0	-4.9
Innse Gall	225	0.0	-6.3
Argyll & the Islands	675	2.3	-7.5
Moray	475	4.4	-9.5
Orkney	65	-7.1	-13.3
<b>HIE Area</b>	<b>3,010</b>	<b>2.9</b>	<b>-1.1</b>
Highland	1,505	3.1	7.5
Scotland	62,625	2.3	-2.6
United Kingdom	708,310	3.1	-1.5

Source: Claimant Count (NOMIS)

Over the month to March 2013, the number of long-term unemployment benefit claimants rose in 5, fell in 1 and remained static in 2 Area Office's – Caithness & Sutherland and Innse Gall. Shetland had the greatest increase over the month, rising 8.3% from 60 to 65 claimants. Orkney was the only area to decrease over the month, falling 7.1% from 70 to 65 claimants.

Over the year to March 2013, the number of people claiming long-term unemployment benefit rose in 2, fell in 5, and was static in the remaining area office – Shetland. Lochaber, Skye & Wester Ross had the greatest increase over the year, rising 17.1% from 205 to 240 claimants. Orkney had the greatest decrease over the year, falling 13.3% from 75 to 65 claimants.

Heather Smith – Research Officer

[heather.smith@hient.co.uk](mailto:heather.smith@hient.co.uk)

Tel: (01463) 244320

Kateryna McKinnon – Economist

[kateryna.mckinnon@hient.co.uk](mailto:kateryna.mckinnon@hient.co.uk)

Tel: (01463) 244258

Further economic information and previous factsheets can be accessed on the HIE Website: <http://www.hie.co.uk>

© Please acknowledge Highlands and Islands Enterprise when using any information contained in this report.