

# UNEMPLOYMENT DIGEST

## AUGUST 2015

---

HIE Research and Economics Team

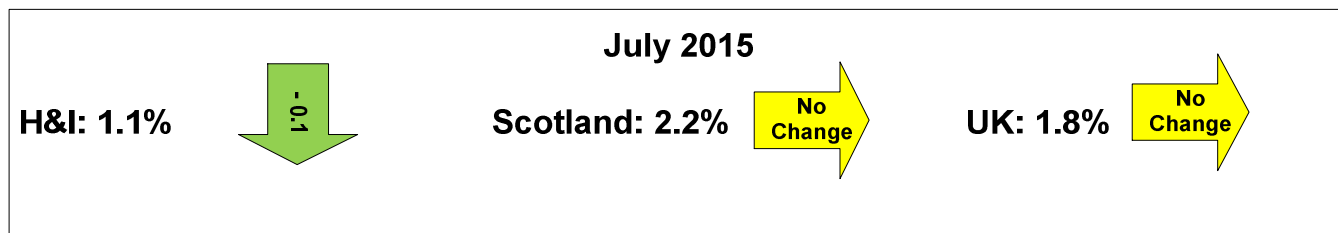


## UNEMPLOYMENT DIGEST

The Information contained in this report is based on Jobseekers Allowance (JSA) figures. The JSA records the number of people claiming Jobseeker's Allowance (JSA) and National Insurance credits at Jobcentre Plus local offices. This is not an official measure of unemployment, but is the only indicative statistic currently available for areas smaller than Local Authorities.

The July 2015 jobseekers allowance unemployment figures\* were released on 12<sup>th</sup> August 2015.

As illustrated by the chart below, the Highlands and Islands continues to have significantly lower unemployment than either Scotland or the UK - a trend which has been fairly constant since the recession.

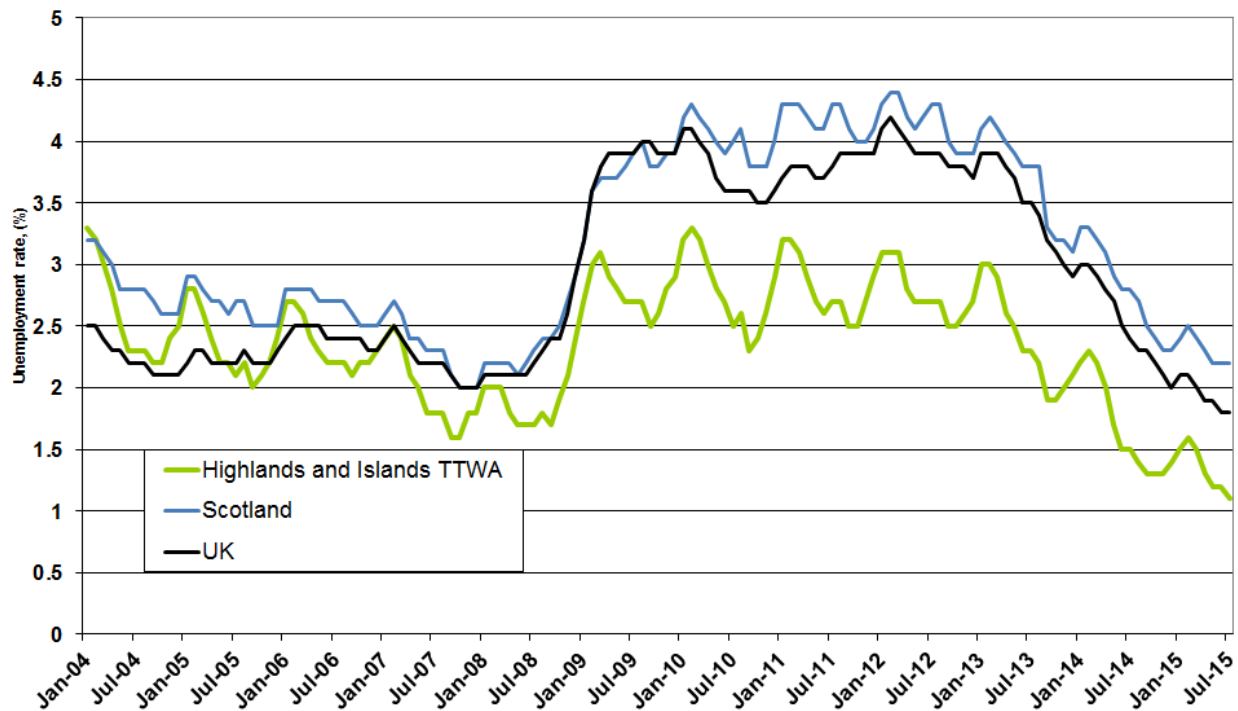


In July 2015, the average jobseekers allowance unemployment rate for the Travel to Work Areas (TTWAs) that comprise the Highlands and Islands was **1.1%**, which was below the rates for both Scotland (**2.2%**) and the UK (**1.8%**). The region's rate was lower than the previous month (1.2%) and that of a year earlier (1.5% in July 2014).

The TTWAs whose rates exceeded the Scottish average in July 2015 were Dunoon & Bute (2.5%) and Campbeltown (2.3%). Nine TTWAs in the Highlands and Islands had rates in June 2015 lower than 1.1% – Oban (1.0%); Skye & Lochalsh and Lochaber (both with 0.8%); Ullapool & Gairloch and Inverness & Dingwall (both 0.7%); Mull & Islay (0.6%); Shetland Islands and Badenoch (both with 0.5%) and Orkney Islands (0.4%).

The total number of people claiming unemployment benefit in the HIE area^ in July 2015 was 3,283. Out of the total, some 1,455 were long term unemployed\*\* and 550 were claimants aged 18-24.

Figure 1 - Unemployment in the Highlands and Islands, Scotland and the UK (2004-2015)



\* Based on Job Seekers Allowance (JSA) figures, produced monthly by ONS.

^ As defined by Scottish datazones.

\*\*1 For the purpose of this analysis, long-term unemployment (LTU) is defined as 'all those who have been unemployed and claiming benefit for over 6 months'.

Table 1 below illustrates the jobseekers allowance rates for each of the 18 TTWAs in the Highlands and Islands.

Table 1 - Unemployment by TTWA

Travel to Work Area	July 2015		June 2015	July 2014	Monthly change		Annual change	
	number	rate	rate	rate	number	rate	number	rate
Dunoon & Bute	304	2.5	2.3	3.4	18	0.2	-110	-0.9
Campbeltown	105	2.3	2.3	3.2	-1	0.0	-41	-0.9
Wick	155	2.0	2.2	3.2	-12	-0.2	-90	-1.2
Eilean Siar	309	1.8	2.0	2.1	-29	-0.2	-52	-0.3
Invergordon	244	1.8	1.8	2.3	1	0.0	-73	-0.5
Thurso	168	1.7	1.8	2.3	-1	-0.1	-50	-0.6
Lochgilphead	74	1.3	1.4	1.6	-5	-0.1	-19	-0.3
Moray	784	1.3	1.4	1.6	-10	-0.1	-128	-0.3
Dornoch & Lairg	73	1.3	1.3	1.5	-6	-0.1	-12	-0.2
Oban	109	1.0	1.0	1.2	4	0.0	-20	-0.2
Skye & Lochalsh	62	0.8	0.8	1.2	-7	0.0	-36	-0.4
Lochaber	95	0.8	0.8	1.1	-7	0.0	-41	-0.3
Ullapool & Gairloch	35	0.7	0.7	0.7	1	0.0	-3	0.0
Inverness & Dingwall	532	0.7	0.7	1.1	-16	0.0	-282	-0.4
Mull & Islay	26	0.6	0.7	0.7	-4	-0.1	-7	-0.1
Shetland Islands	69	0.5	0.5	0.6	-11	0.0	-26	-0.1
Badenoch	46	0.5	0.5	0.7	2	0.0	-15	-0.2
Orkney Islands	52	0.4	0.4	0.8	-2	0.0	-54	-0.4
Highlands and Islands TTWA	3,242	1.1	1.2	1.5	-81	-0.1	-1,057	-0.4
Scotland	75,287	2.2	2.2	2.8	38	0.0	-21,684	-0.6
United Kingdom	723,980	1.8	1.8	2.4	-9,991	0.0	-271,855	-0.6

Table 2 shows the total jobseekers allowance unemployment, by number and rate over the month and year, long-term unemployment (LTU) and youth unemployment by HIE area office.

Table 2 - Unemployment by Area Office

HIE Area Office	Total Unemployment		Monthly change		Annual change		LTU	Youth Unemployment (18-24)
	number	rate*	number	%	number	%	number	number
Innse Gall	309	1.9	-29	-8.6	-52	-14.4	180	40
Caithness and Sutherland	411	1.8	-14	-3.3	-153	-27.1	265	65
Argyll and the Islands	659	1.5	8	1.2	-197	-23.0	315	125
Moray	784	1.4	-10	-1.3	-128	-14.0	245	175
Inner Moray Firth	822	0.9	-25	-2.9	-452	-35.1	315	110
Lochaber, Skye and Wester Ross	177	0.7	-14	-7.3	-77	-30.3	95	10
Shetland	69	0.5	-11	-13.8	-26	-27.4	15	15
Orkney	52	0.4	-2	-3.7	-54	-50.9	25	10

Research and Economics  
August 2015

Contact us at [hieresearch@hient.co.uk](mailto:hieresearch@hient.co.uk)

