

UNEMPLOYMENT DIGEST

JUNE 2015

HIE Research and Economics Team

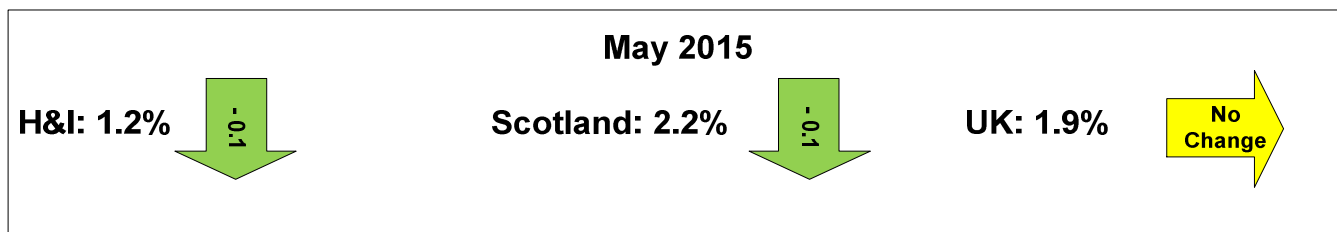


UNEMPLOYMENT DIGEST

The Information contained in this report is based on Claimant Count figures. The Claimant Count measures the number of people claiming benefits principally for the reason of being unemployed. The Department for Work and Pensions (DWP) introduced a new benefit, Universal Credit, in April 2013. At present Universal Credit benefit is not included in the Claimant Count figures. Office for National Statistics (ONS) and DWP are working to include jobseeker Universal Credit claims in the Claimant Count as soon as possible.

The May 2015 claimant count unemployment figures* were released on 17th June 2015.

As illustrated by the chart below, the Highlands and Islands continues to have significantly lower unemployment than either Scotland or the UK - a trend which has been fairly constant since the recession.

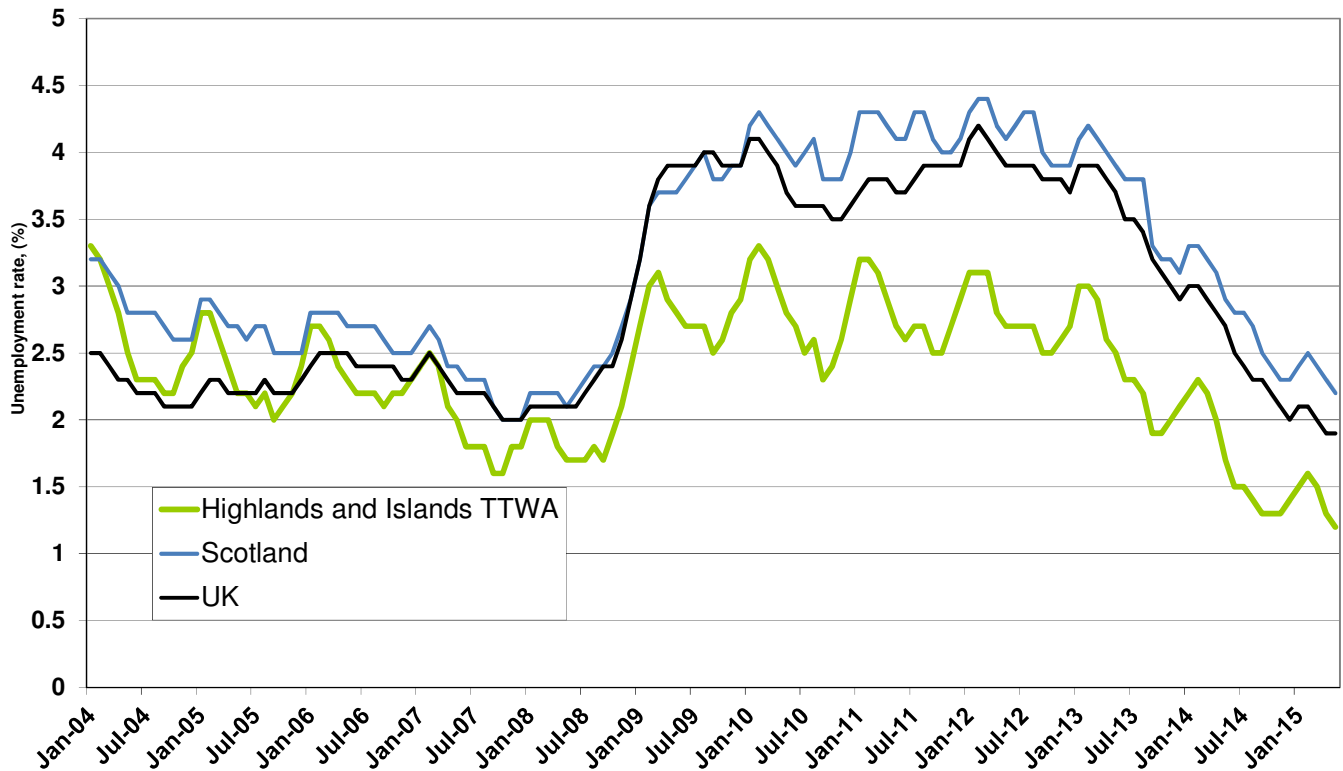


In May 2015, the average claimant count unemployment rate for the Travel to Work Areas (TTWAs) that comprise the Highlands and Islands was **1.2%**, which was below the rates for both Scotland (**2.2%**) and the UK (**1.9%**). The region's rate was lower than the previous month and that of a year earlier (1.7% in May 2014).

The TTWAs whose rates exceeded the Scottish average in May 2015 were Dunoon & Bute (2.4%) and Campbeltown (2.3%). Nine TTWAs in the Highlands and Islands had rates in May 2015 lower than 1.2% – Oban (1.1%); Skye & Lochalsh (1.0%); Lochaber (0.9%); Ullapool & Gairloch, Mull & Islay and Inverness & Dingwall (all 0.7%); Shetland Islands (0.6%) and Badenoch and Orkney Islands (both with 0.5%).

The total number of people claiming unemployment benefit in the HIE area^ in May 2015 was 3,471. Out of the total, some 1,555 were long term unemployed** and 630 were claimants aged 18-24.

Figure 1 - Unemployment in the Highlands and Islands, Scotland and the UK (2004-2015)



* Based on Job Seekers Allowance (JSA) Claimant Count figures, produced monthly by ONS.

^ As defined by Scottish datazones.

**1 For the purpose of this analysis, long-term unemployment (LTU) is defined as 'all those who have been unemployed and claiming benefit for over 6 months'.

Table 1 below illustrates the claimant count rates for each of the 18 TTWAs in the Highlands and Islands.

Table 1 - Unemployment by TTWA

Travel to Work Area	May 2015		April 2015		May 2014		Monthly change		Annual change	
	number	rate	rate	rate	number	rate	number	rate		
Dunoon & Bute	293	2.4	2.7	3.5	-36	-0.3	-136	-1.1		
Campbeltown	105	2.3	2.3	3.1	0	0.0	-35	-0.8		
Wick	171	2.2	2.4	3.6	-14	-0.2	-104	-1.4		
Eilean Siar	351	2.1	2.3	2.4	-35	-0.2	-52	-0.3		
Invergordon	254	1.8	2.2	3.2	-55	-0.4	-193	-1.4		
Thurso	170	1.8	1.8	2.4	-7	0.0	-64	-0.6		
Dornoch & Lairg	81	1.4	1.6	2.0	-9	-0.2	-32	-0.6		
Lochgilphead	82	1.4	1.5	1.8	-8	-0.1	-23	-0.4		
Moray	772	1.3	1.5	1.7	-75	-0.2	-227	-0.4		
Oban	114	1.1	1.3	1.5	-22	-0.2	-49	-0.4		
Skye & Lochalsh	83	1.0	1.4	1.6	-33	-0.4	-46	-0.6		
Lochaber	114	0.9	1.2	1.3	-35	-0.3	-50	-0.4		
Ullapool & Gairloch	35	0.7	0.8	1.0	-4	-0.1	-18	-0.3		
Mull & Islay	33	0.7	0.8	0.9	-3	-0.1	-8	-0.2		
Inverness & Dingwall	559	0.7	0.8	1.3	-61	-0.1	-400	-0.6		
Shetland Islands	86	0.6	0.8	0.8	-29	-0.2	-38	-0.2		
Badenoch	47	0.5	0.7	0.9	-11	-0.2	-30	-0.4		
Orkney Islands	70	0.5	0.7	0.8	-25	-0.2	-35	-0.3		
Highlands and Islands TTWA	3,420	1.2	1.3	1.7	-462	-0.1	-1,540	-0.5		
Scotland	77,488	2.2	2.3	2.9	-3,144	-0.1	-23,619	-0.7		
United Kingdom	761,962	1.9	1.9	2.7	-34,005	0.0	-328,014	-0.8		

Table 2 shows the total claimant count unemployment, by number and rate over the month and year, long-term unemployment (LTU) and youth unemployment by HIE area office.

Table 2 - Unemployment by Area Office

HIE Area Office	Total Unemployment		Monthly change		Annual change		LTU	Youth Unemployment (18-24)
	number	rate*	number	%	number	%	number	number
Innse Gall	351	2.2	-40	-10.2	-52	-12.9	185	50
Caithness and Sutherland	434	1.9	-69	-13.7	-208	-32.4	270	70
Argyll and the Islands	678	1.6	-173	-20.3	-253	-27.2	340	125
Moray	772	1.4	-150	-16.3	-227	-22.7	260	195
Lochaber, Skye and Wester Ross	220	0.9	-199	-47.5	-106	-32.5	120	15
Inner Moray Firth	860	0.9	-239	-21.7	-623	-42.0	335	135
Shetland	86	0.6	-19	-18.1	-38	-30.6	15	20
Orkney	70	0.5	-29	-29.3	-35	-33.3	30	20

Research and Economics
June 2015

Contact us at hieresearch@hient.co.uk

